



*Windows  
on  
Queen*

# **QUEEN STREET RICHES & TEXTURES 2018**

**QUEEN STREET RICHES & TEXTURES 2018**

art.mentorship.community engagement.

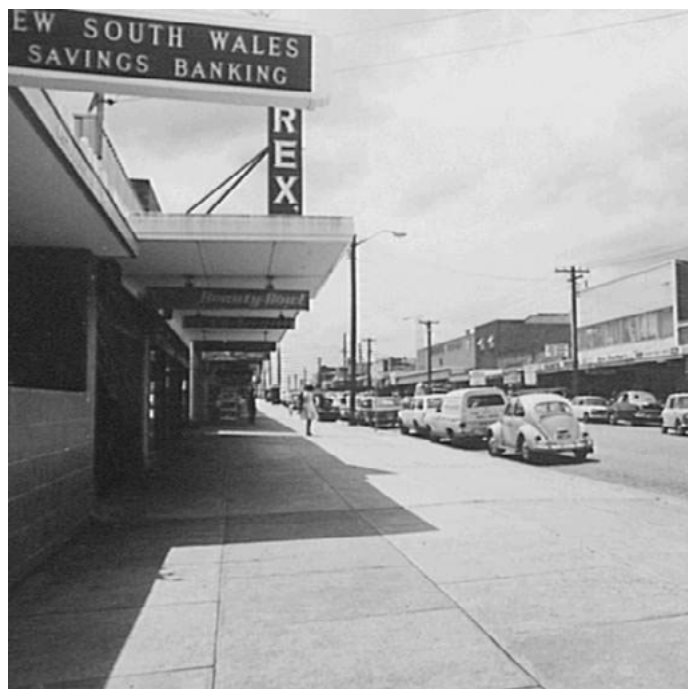
**WINDOWS ON QUEEN**

## **Statement of Recognition of Penrith City's Aboriginal and Torres Strait Islander Cultural Heritage**

Council values the unique status of Aboriginal people as the original owners and custodians of lands and waters, including the land and waters of Penrith City.

Council values the unique status of Torres Strait Islander people as the original owners and custodians of the Torres Strait Islands and surrounding waters.

We work together for a united Australia and City that respects this land of ours, that values the diversity of Aboriginal and Torres Strait Islander cultural heritage, and provides justice and equity for all.



# QUEEN STREET RICHES & TEXTURES 2018

art.mentorship.community engagement.

## WINDOWS ON QUEEN

The project produced at St Marys Corner Community and Cultural Precinct Penrith City Council from February to June 2018

Penrith City Council  
601 High Street Penrith NSW Australia  
02 4732 7838  
council@penrithcity.nsw.gov.au  
www.penrithcity.nsw.gov.au

© Copyright Penrith City Council, authors and photographers.

Project initial concept: Marion McLeod and the members of St Marys and District Historical Society

Queen Street Riches and Textures project team:  
Adnan Begic and Karen Harris

Guest artist and mentor:  
Stephanie Peters

Participating artists  
Lorrina Al-Khoury  
Nathaniel Morrison

Researchers/Interviewees: Carol Volkiene, Lyn Forde, Eric Kent and Paul Mills.

Community participants/Interviewees: Phil Martin, Guido Piccirilli, Norma Thorburn, David Trist and Bruce Kilgour.

Project support:  
St Marys and District Historical Society, Nepean Arts and Design Centre TAFE NSW-Western Sydney Institute, The New South Wales State Archives Kingswood, Fusion Café, Precision Specs St Marys, Cassandra on the Park, Super Low – Variety Store, Skye's The Limit For Hair, Professionals St Marys, Guido's Hairdressing, Son of a Gun, Castlereagh Imaging, Anastacia's Hair Design, Raine & Horne St Marys, Blue Ribbon Saddlery, St Marys Town Centre Association, Community and Cultural Development Department, Penrith City Library, Penrith City Council.

**PENRITH**  
CITY COUNCIL

**ST MARYS CORNER**  
COMMUNITY AND CULTURAL PRECINCT

ST.MARYS & DISTRICT  
HISTORICAL SOCIETY  
"THE CHAMBERS" - ST MARYS CORNER







# CONTENTS

|                           |    |
|---------------------------|----|
| Mayoral Message           | 9  |
| Windows On Queen          | 11 |
| Lead Artist's Statement   | 13 |
| Windows On Queen Site Map | 15 |
| Participating Researchers | 41 |
| The Creative Team         | 45 |
| Image Credits             | 47 |





# MAYORAL MESSAGE

Penrith City Council supports the promotion and celebration of our heritage so future generations can learn from and understand our past.

This year's Queen Street Riches and Textures project, Windows on Queen, celebrates the heritage of St Marys. The project's initial concept was identified by Marion McLeod and the members of the St Marys and District Historical Society. The concept involved recounting the story of some prominent locations in Queen Street through historical photographs, research and capturing resident memories.

The project tells the story of Queen Street through colourful posters in selected windows, the book and extended educational web content that captures moments in Queen Street's past. The short interviews bring to life vivid personal stories of times past as told by local residents and shop owners.

The members of the Society have enthusiastically participated in this unique journey. Windows on Queen identifies some current locations with historical significance, undertakes historical research, connecting with owners and businesses occupying these locations as well as many other local residents to provide a unique insight into our past.

I'd like to congratulate and applaud everyone involved in making Queen Street Riches and Textures 2018 such a successful project - local residents, artists, researchers from the St Marys and District Historical Society and the Council staff involved.

We are proud to announce that Windows on Queen will be promoted at this year's St Marys Spring Festival enabling local residents to learn about and connect with their own history and heritage.

I hope you enjoy the wonderful achievements of this project.

Councillor John Thain

Mayor





# WINDOWS ON QUEEN

Windows on Queen is a cultural project that celebrates the character and the history of Queen Street, the main street of St Marys. The initiative was first proposed in 2017 by local community member Marion McLeod whose vision incorporated developing a community art project in the windows of commercial buildings facing the street with historical photographs of the same locations. The idea was discussed with the current business owners which received exciting positive feedback.

A working group passionate about St Marys was formed in November 2017 with the community and members of St Marys and District Historical Society. They have tirelessly worked on developing the project engaging the wider community in historical research and hunting old photographs of past houses, shops and businesses on Queen Street.

Information and photographs on the twelve selected locations was collected from different sources - research from local newspapers at the St Marys and the District Historical Society, the New South Wales State Archives Kingswood and Local Studies Collection at Penrith Library as well as private photo albums, personal memories and stories from local residents.

A creative team was formed in February 2018 with Stephanie Peters as principal artist and mentor of Lorrina Al-Khouri and Nathaniel Morrison, Western Sydney University design graduates, whose engagement in this project provided a valuable professional development opportunity.

The creative team consulted with the community, working with historical documents, photographs and St Marys residents' stories about Queen Street. This material has been translated into twelve colourful posters, as well as a book and the online material that offers additional historical narrative.

We would like to congratulate the proficient historical research undertaken by the members of the St Marys and District Historical Society - Carol Volkiene, Lyn Forde, Eric Kent and Paul Mills.

We also thank community members who provided their valuable time and knowledge making the interviews possible - Phil Martin, Guido Piccirilli, Norma Thorburn, David Trist and Bruce Kilgour. We also thank participating businesses on Queen Street who have provided a display window to exhibit this unique public historical display.

Queen Street Riches and Textures 2018 - Windows on Queen makes a significant contribution to strengthen connections in the St Marys community and fulfilling the objectives of art, mentorship and community engagement.





# LEAD ARTIST'S STATEMENT

The Windows on Queen Street 2018 began with visits to Queen Street, Historical Society meetings and the NSW State Archives in late 2017 to become acquainted with the area - both past and present. Each visit provided a deeper look at these personal stories and history of the 12 sites.

The next step for Adnan and me was to interview emerging artists to become a part of the creative team. Recent Western Sydney University graduates; Lorrina Al-Khoury and Nathaniel Morrison, were selected for their promising talent.

As a team we started interpreting the stories from the 12 selected locations. The challenge was to honour the stories and create new artworks to bring this history to life for a contemporary audience.

It has been my pleasure to continue my work with community in this public space, to contribute to the recording; maintaining and of history sharing that honours the past through photographs, videos, colour, patterns and sound. I have also enjoyed the opportunity to work with both emerging creatives and in turn providing them a chance to explore their design strengths.

I extend my gratitude for those who have made this project possible, Penrith City Council staff Adnan Begic, Karen Harris, Adam Gatt and Belinda Prestwidge, the Historical Society, Carol Volkiene, Lyn Forde, Eric Kent, Norma Thorburn, Paul Mills, and community members Guido Piccirilli, Phil Martin, David Trist and Bruce Kilgour. As well as the support from The NSW State Archives, John Cann and last but not least the talented creative team Lorrina Al-Khoury and Nathaniel Morrison. It has been a great experience to collaborate with all of you.

Stephanie Peters, Visual Artist and Mentor, Queen Street Riches and Textures 2018



# WINDOWS ON QUEEN SITE MAP

## Historical Locations and Participating Businesses on Queen Street St Marys

- 1. ST MARYS FRUIT KING**  
Fusion Café, Cnr Station and Queen Street
- 2. NURSE EDWARD'S PRIVATE HOSPITAL**  
Precision Specs St Marys, 54 Queen Street
- 3. COACHMAN'S PARK**  
Approximate location at Cassandra on the Park, 131 Queen Street
- 4. ST MARYS CROWN THEATRE**  
Approximate location at Super Low Variety Store, 135 Queen Street
- 5. ST MARYS METHODIST CHURCH**  
Approximate location at Skye's the Limit For Hair, 149 Queen Street
- 6. FLEMING'S CORNER SHOP**  
Professionals St Marys, Cnr Queen Street and Crana Street
- 7. GUIDO'S BARBER SHOP**  
181A Queen Street
- 8. JIM MILL'S MENSWEAR**  
Son of a Gun, 193/195 Queen Street
- 9. QUEEN STREET THE PAST**  
Castlereagh Imaging, 204 Queen Street
- 10. COMMONWEALTH BANK**  
Anastacia's Hair Design and St Marys Library, 207 - 209 Queen Street
- 11. JOHN OXLEY BATHURST GRANT**  
Raine & Horne St Marys, 210 Queen Street
- 12. BEACROFT'S BUTCHERS**  
Blue Ribbon Saddlery, Cnr Queen Street and Great Western Highway

# ST MARYS FRUIT KING

## Fusion Café, Cnr Station and Queen Street

This location was known as the St Marys Fruit King shop that was owned by the Mercuri family, along with another fruit and vegetable shop located at 86 Queen Street. The site has been always one of the busiest points on Queen Street due to the proximity of the St Marys Railway Station and Parcels Office across the road.

The railway line to St Marys was opened in May 1862 and its importance was immeasurable, supporting improved transport, goods distribution, local economy and overall development of the street and suburb.

The original station had a waiting room to the central platform and the parcels office both built in brick. Cattle saleyards and saw mills surrounded the station, providing easy access to the railway line. The station was originally named South Creek but was renamed St Marys in August 1885. The name “St Marys” first appeared in the public train timetable of 1 August, 1885.

The first electric train into St Marys was the official train bearing the Premier of NSW of the time. The train departed from Central Station at 9.03 a.m. on Saturday, October 8, 1955 and arrived at St Marys at 10:15 a.m. when, after a ribbon cutting ceremony, it proceeded to Penrith. (Ref. from Eugenie Stapleton's book – “Old Times Old Tales”).





# NURSE EDWARD'S PRIVATE HOSPITAL

Precision Specs St Marys, **54 Queen Street**

On this location stood Nurse Ethel Edward's private hospital residence. Nurse Ethel Edward served in the hospital at the beginning of the 20th century.

In September 1920 the St Marys' branch of the Red Cross Society surprised Nurse Edwards with a farewell party as she was leaving the district and about to marry Arthur Wilson Evans.

They recognised her valuable work on behalf of the Red Cross and other organisations in the town as well as her sterling personal qualities. The President of the local branch of the Society on behalf of the members presented Ethel with an inscribed silver-mounted oak tray and a silver afternoon tea service, referring to her splendid work done as a member of the branch since its inception.

The inscription on the tray was "Presented to Miss E. Edwards from her fellow members of the St Marys branch of the Red Cross Society - October 1920."

In June 1949 Ethel died in Strathfield where she had been living since leaving St Marys.



# COACHMAN'S PARK

Approximate location at Cassandra on the Park, **131 Queen Street**

Coachman's Park is positioned on the corner of Queen Street and Charles Hackett Drive. In the 1960's and 1970's the park was called "Rotary Park" and sometimes "Hingerty Park" but in 1976 officially became "Coachman's Park".

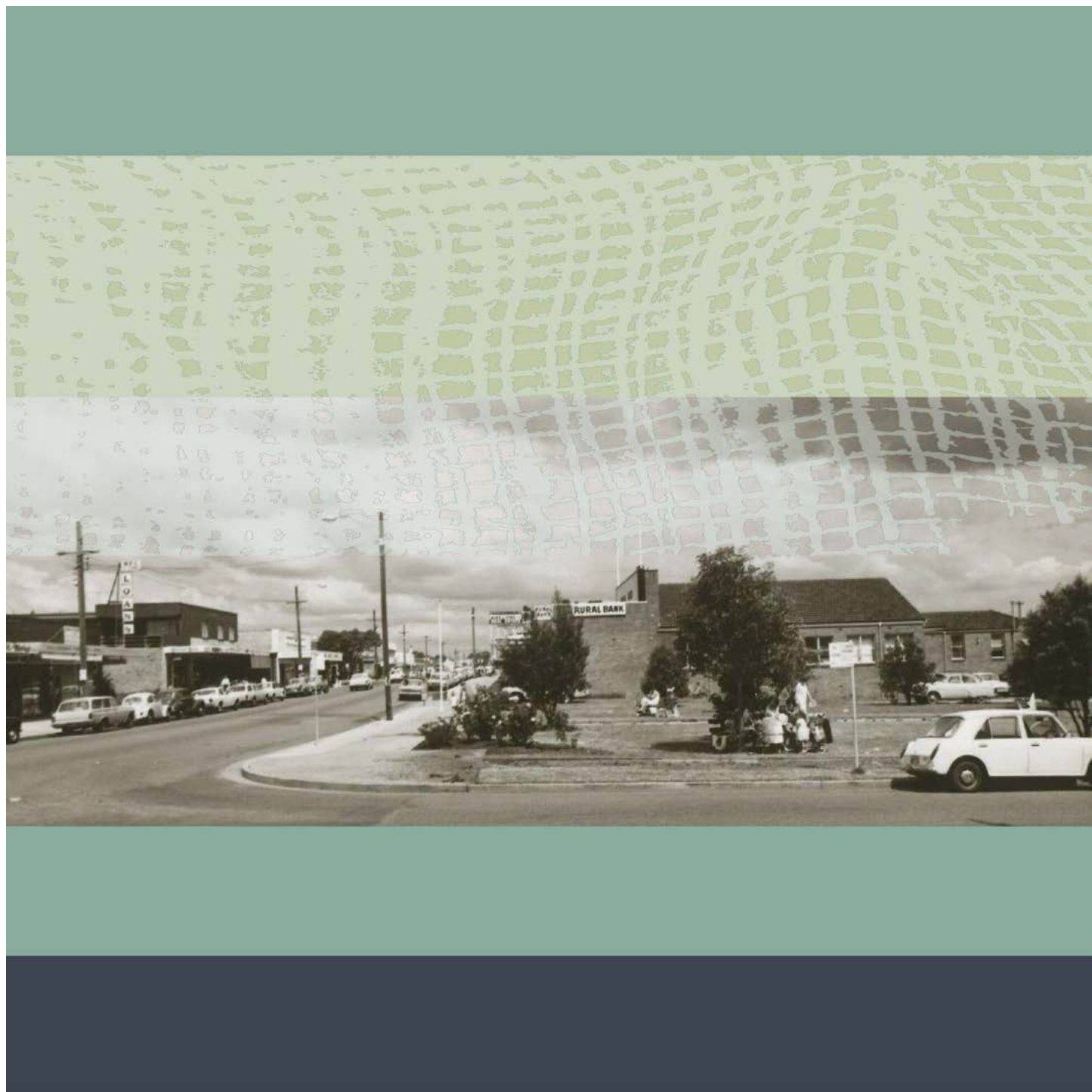
Charles Hackett Drive was named after a member of the Hackett family. He was the son of convict James Hackett who was sent to Australia in 1826 for horse stealing. "Charlie", as he was known, inherited most of the estate from James who owned a large portion of land from Queen Street to South Creek.

In 1937 a part of the old Hackett racecourse paddock abutting South Creek was sold subdividing this area from Queen Street. In the 1960s and 1970s the park was called "Rotary Park" due to the efforts of the St Marys Rotary Club to keep the park in good condition.

The Council had originally named the park "Hingerty Park" but in 1976 officially became "Coachman's Park" associating it with the Bennett Wagon works in Queen Street.

In 1984 Council remodelled the park with paving, pergolas, park seating and landscaping throughout with funding through the Community Employment Program. In 2013, after community consultations, Council redesigned the park with inclusion of public artworks reflecting St Marys' industrial and Aboriginal heritage.

Research by Lyn Forde  
Interview with Phil Martin



# ST MARYS CROWN THEATRE

Approximate location at Super Low Variety Store, **135 Queen Street**

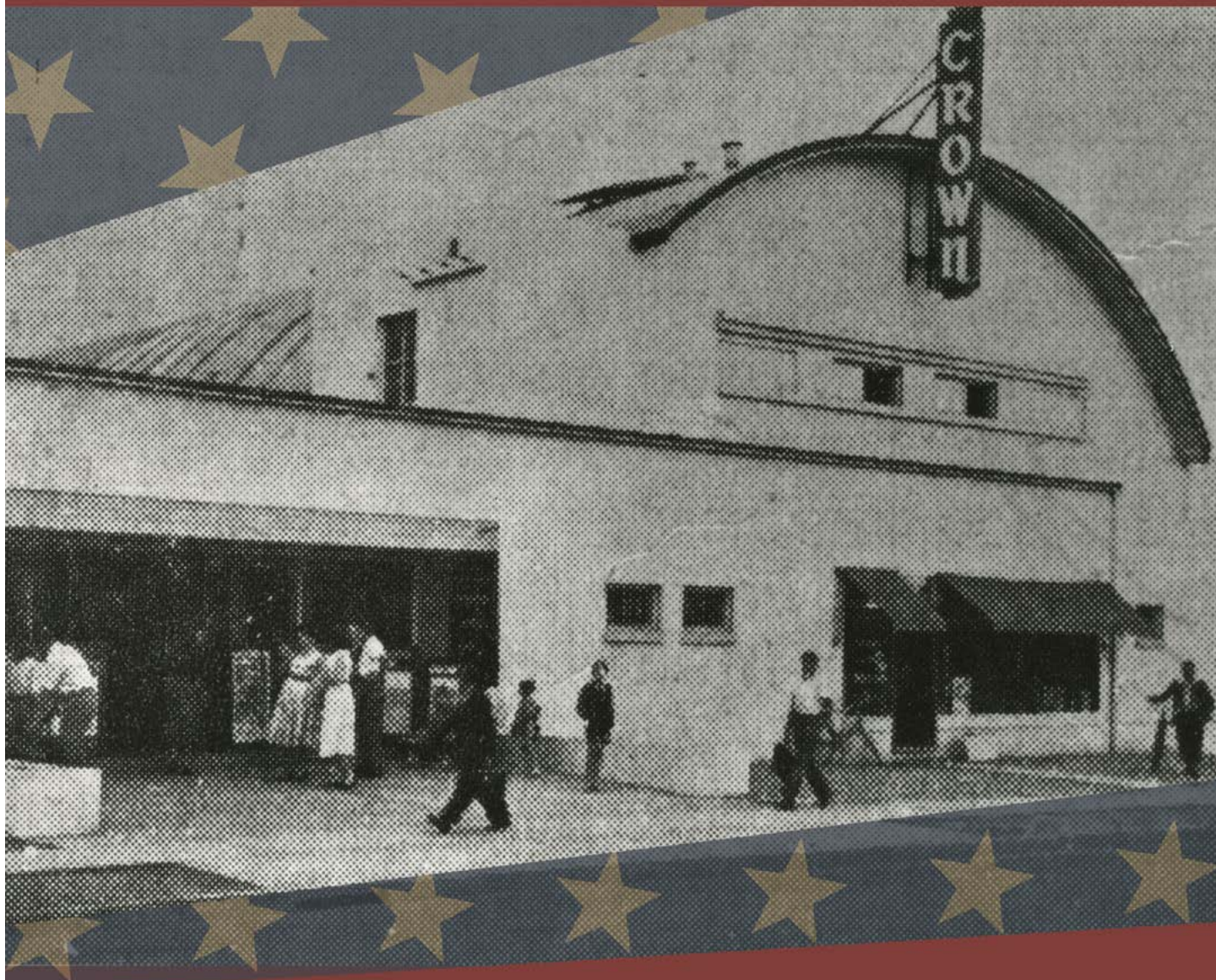
On the western side of Queen Street, about halfway between the highway and the railway line, stood the famous Crown Theatre. In the 1950's and 1960's the cinema was a major magnet in Australia's social life and everyone from town was going to "the pictures". Local theatres were community hubs, often used as a stage for local bands and other entertainment. They were a place to meet friends, step out in style or go on a date.

My vivid memories involve getting dressed up of a Saturday night and going to the movies with my girlfriend and holding hands. At interval we would go out and buy ice cream and chocolates when we could afford them.

The Crown Theatre in St Marys was opened on 14 April 1954 by the Mayor of Penrith Ald W. L. Chapman. Mr L.F. Spence was the Chairman of the directors who also owned the Nepean Theatre at Penrith.

In the centre of the building there was a shop that became the famous Jim Hackett Hairdressers. The foyer/lounge had a refreshment bar to the left side as you walked in and on the opposite side at the front there was a ticket office and entrance to the theatre. Internally there was a gentle slope to the stage, and the back section was tiered to the projection room. The Theatre closed in 1967 or 1968.





# ST MARYS METHODIST CHURCH

Approximate location at Skye's the Limit For Hair, **149 Queen Street**

The first Methodist church erected on this site was a weatherboard one. The ground on which the church was built, a quarter of an acre, was given by Mr. George Matthews.

The foundation stone was laid on the 14th June 1860 and the opening service was conducted on the 10th October 1860. The building was erected at a cost of £100. This timber building became infested with white ants and was replaced by a brick church in 1893 with additions made to the Sunday School in 1925 and again in 1955. The church was later demolished in 1972.

When the Methodist Church closed its doors the members worshipped with the members of Mt Druitt Methodist Church at the corner of Mt Druitt Road and Ropes Creek Road for about eighteen months until the completion of the new church in Brisbane Street, Oxley Park.

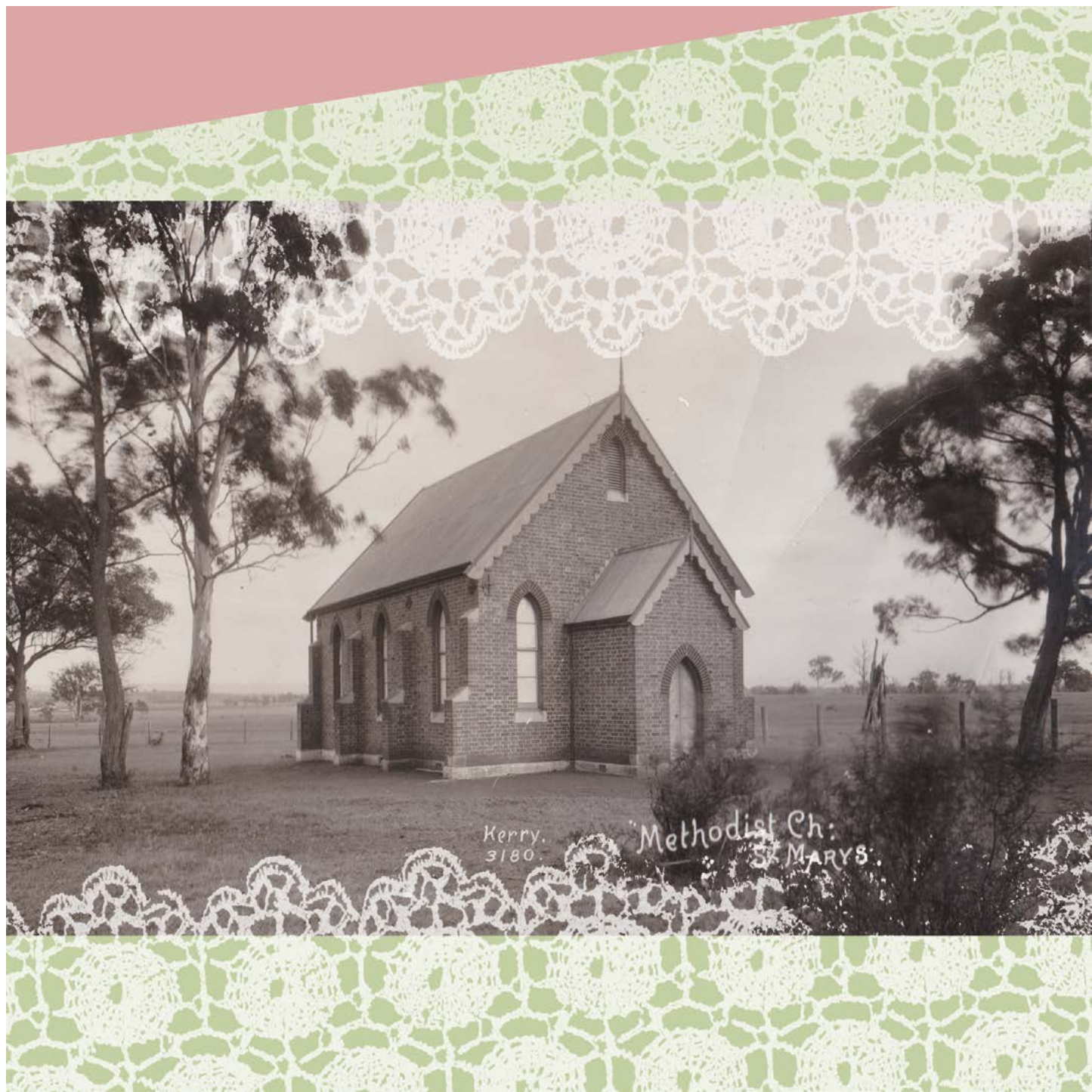
The "Wesley Memorial Christian Centre" was officially opened on 28th February 1976, uniting the Congregations of Mt Druitt and St Marys. In June 1977 the Congregational Union and the Methodist and Presbyterian Churches came together as one to establish the Uniting Church in Australia.

## References:

Penrith City Library - Penrith Methodist Circuit Centenary 1861-1961 "Upon this Rock..."  
St Marys Uniting Church Elder, Barbara Porter.

Research by and interview with Caroline Volkiene





# FLEMING'S CORNER SHOP

Professionals St Marys, **Cnr Queen Street and Crana Street**

Fleming's Corner Shop was located on the western side of Queen Street on the corner of Crana Street. It was a disposal store which sold industrial clothing and footwear.

This site was part of 600 acres of land originally granted to Mary Putland, daughter of the 4th Governor of New South Wales Captain William Bligh RN, by Crown Grant dated the 1st day of January 1806.

An aerial map dated 1943 shows a house, owner unknown, on this site. Between 1944 and 1950 records show a number of transfers took place on this property. On the 13th April 1950 the property was sold to Maurice Edward Renshaw, Medical Practitioner. At the time Dr. Renshaw had rooms on the corner of the Great Western Highway and Queen Street and planned to move into the new premises. Part of this land was transferred to a Mr Cohen on the 26th June 1953. In 1974, records from Penrith City Council name the owner as J. & G. Bragar.

The Renshaw Medical Centre is currently sited on the portion of land around the corner in Crana Street.





# GUIDO'S BARBER SHOP

**181A Queen Street**

Jim Hackett's barber shop moved to 181A Queen Street in the 1960's after moving from the shop at the front of St Marys Crown Picture Theatre. The owner, Jim Hackett, called it "Jim Hackett and his Bow Tie Boys", as his barbers wore bow ties. Jim had changed their uniforms after seeing the television show "Ben Casey", as he thought his barbers would look better in the style of uniform worn by Dr Ben Casey. During Jim's time as a barber he had seven apprentices: Mick Codner, Denis Luxford, Sid Barwick, Guido Piccirilli, Brian Summerhayes, Tony Hughes and an unnamed female.

Hackett renamed the business "Jim Hackett Hairdresser and Tobacconist" and in 1982 sold the business to his former apprentice Guido Piccirilli. The business then moved to 183 Queen St in 1997 under the name "Guido's Hair Care".

Previous known businesses at 183 Queen Street were Bill Peard's Chemist shop followed by John Tait's Chemist shop; another Chemist shop (purchased business from John Tait and changed name); hairdresser; children's clothing shop; paint shop; finance shop and then Guido's Hair Care.



# JIM MILL'S MENSWEAR

Son of a Gun, **193/195 Queen Street**

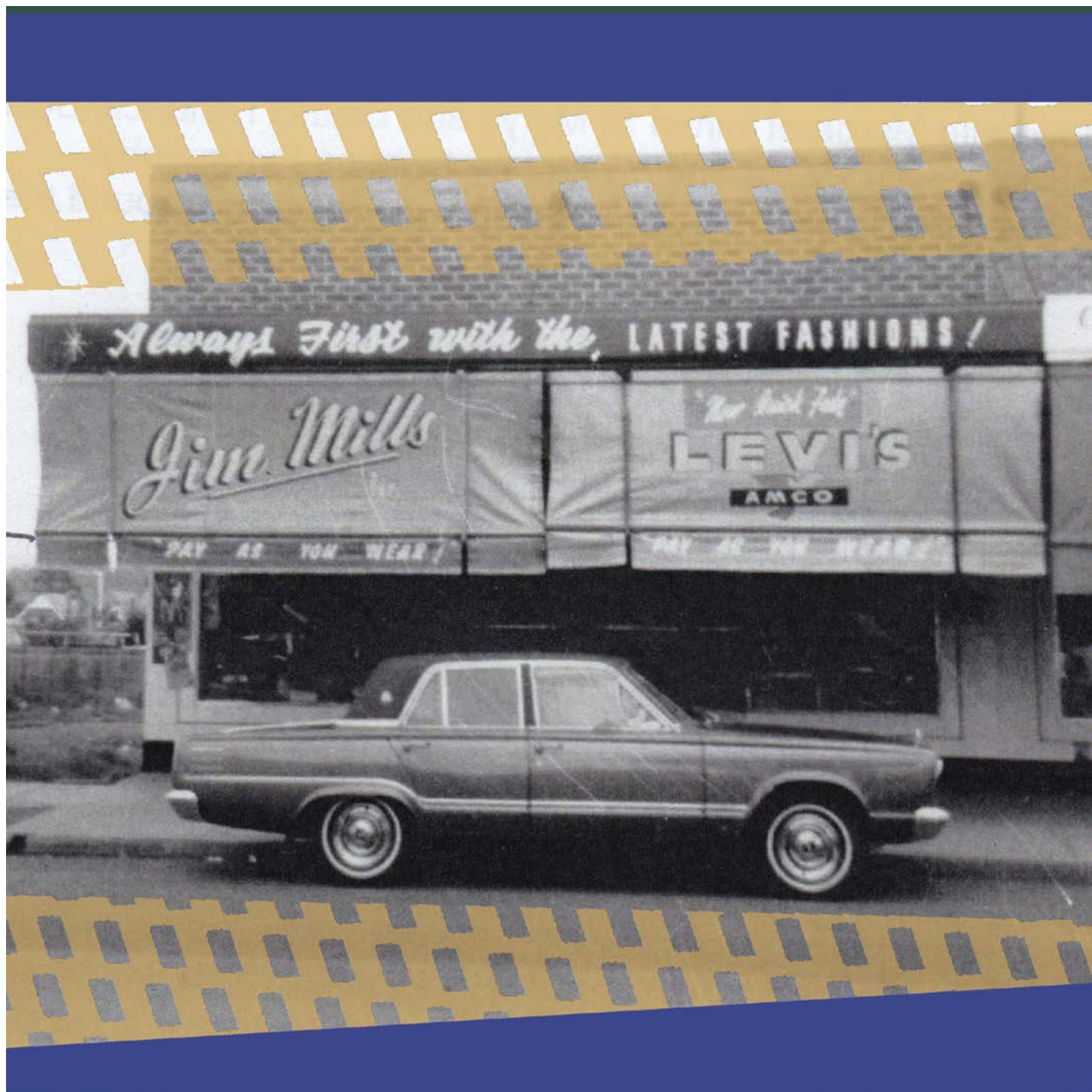
At this address stood Jim Mills Menswear Shop, opened in 1956. The shop was originally two smaller shops purchased by Jim and his wife Enid and later converted into one. Shop 195 had previously been a Pet Supply Store (W.J. Davis) and a Baby's Wear Shop ("Alice Faye Tiny Tots' & Children's Wear").

Originally named "Jim Mills Mercer and Draper" the business name later changed to "Jim Mills Men's and Boys Wear" in the early 1960's. Before opening the shop Jim hawked his wares around the district door to door. He built up a good following of loyal customers, some of whom still purchased clothes in the store up until it closed its doors in 2010.

The shop was also refitted few times changing names to "Jim Mills Mensland" after joining the Mensland buying group. Mensland Associated Retailers Ltd, was set up by a group of retailers Australia wide, who joined together to provide better buying power. All stores were still privately owned. The business under this name closed in September 2010.

In 2011 a new business started and signage went up for "The Surf Wear Scene". The shutter doors were airbrushed with a surf mural to discourage graffiti. For an inland city, some may be surprised to learn that champion surfer Mick Fanning was born in the district, as was the founder of the world famous surfwear brand "Billabong", Gordon Merchant. Merchant attended both St Marys Public and High Schools.

Research by and interview with Paul Mills





# QUEEN STREET THE PAST

Castlereagh Imaging, 204 Queen Street

Queen Street has seen well over a century of changes. Once called Dickson Lane, Mamre Road, Windsor Road and Station Street, Queen Street changed its name for good in 1897 after Queen Victoria's Diamond Jubilee. Queen Street is now the main street of the "St Marys Town Centre" and is characterised by traditional shop fronts and wide pedestrian walkways.

In 1890 there was no footpath along the east side from the highway corner to the railway station. There was a public animal pound in the street in 1898 and in 1903 the Nepean Times commented on a cow straying on the street - quite a common sight with animals straying from yards.

By 1906, St Marys' Council was calling for tenders for gravel and kerbing of 10 chains of footpath along the street. In 1910 Council called for the provision of six lights along the street - a street that seemed to attract much in the way of drunkenness and riotous behaviour. In 1916 Council confirmed that a car and pedestrian crossing was being placed on the north-western side of the street to the railway yard.

With a history dating back to 1862, St Marys train station has seen some changes too. The original station had a waiting room to the central platform and the Parcels Office, both built in brick. Cattle saleyards and saw mills surrounded the station, providing easy access to the railway line. The station was originally named South Creek but was renamed St Marys in August 1885. The name "St Marys" appeared in the public train timetable in August that year.

Research by Lyn Forde  
Interview with Norma Thorburn





# COMMONWEALTH BANK

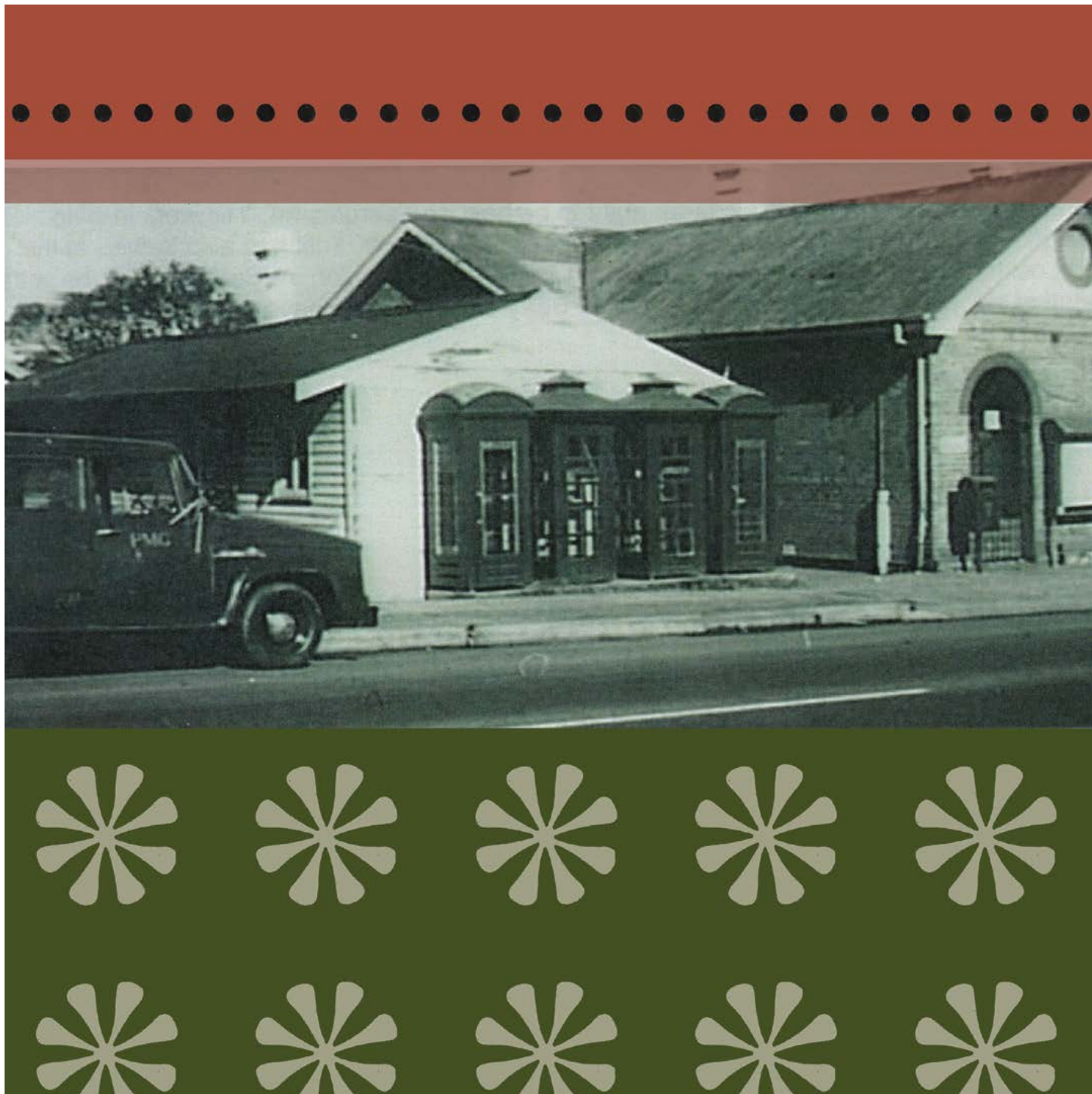
Anastacia's Hair Design and St Marys Library, **207 - 209 Queen Street**

The first bank branch at St Marys opened in May 1947, located on land beside the telephone exchange and St Marys' post office on the highway and rented from the Presbyterian Church for £1 per week. The opening marked another step forward in the development of St Marys as a progressive community.

In the 1960's this location was home to many businesses such as "Automotive Spare Parts" and "Phillips and Thomas Pushbike and Motorbike Sales and Service". The site was bought from Phillips & Thomas in September 1976 and construction began on the new bank building that would become the Commonwealth Bank, St Marys. The bank continued in this location until 1996.

In 1961 former accountant at Penrith branch of the Commonwealth Banking Corporation, Mr. D. Trist had been appointed manager of the bank's South Wagga branch.

In 1997 the building had been vacant for a year. Penrith City Council bought the building for \$1 million. The space became the new library, giving the St Marys' economy a boost and providing further access to Council and Community services.



# JOHN OXLEY BATHURST GRANT

Raine & Horne St Marys, **210 Queen Street**

Surveyor-General John Oxley owned the grant called “Bathurst” on this site that was bought by the King family when he died and was later sold to Solicitor Phillip Thompson around 1970.

In 1970 the properties on either side of Thompson’s were owned by Gary Horne - an electrical shop on the northern side and a vacant lot on the southern side. The southern lot was sold to Thompson in 1970 and the enlarged space allowed Thompson to do his first stage build. He hired Clive Field from St Marys who built a two storey building in 1973 and Phillip soon moved in.

In 1980 Gary Horne retired and Phillip bought his shop the northern side. He demolished the shop and started the second stage build with Rennat Constructions of St Marys who had an office in the Star Arcade. This is the building that stands at 210 Queen Street today.







# BEACROFT'S BUTCHERS

Blue Ribbon Saddlery, **Cnr Queen Street and Great Western Highway**

From 1885 to 1980 this site was known to be changing hands to local butchers. Walter “Wally” Williams’ “Newmarket Butchery” Shop opened in 1908 and closed in 1913. The location was most notably known as “Beacroft’s Corner” by George Beacroft whose famous butchery was open between 1923 and 1925.

An early 1885 map showed a weatherboard dwelling on this site occupied by a butcher. In 1903, James Hope bought the property and for two years John Giles a St Marys’ builder built a brick shop.

The shop was leased to Walter Williams who in 1908 opened “Newmarket Butchery” naming it after the nearby cattle saleyards out along the Mamre Road.

From the day it opened until the day it closed it was always a butcher’s shop for 75 years and was the only business in St Marys to have had the distinction of serving continuously to over three generations of St Marys citizens, a record for what was for a very long time just a small country town.

Williams remained for five years. Charles Adams took over for a year, then Timmins’ Butchers in 1923, George Beacroft until 1925, Fred Bull until 1926, William Everingham until 1928 and Charles Unicombe until 1936 when it was sold back to family Beacroft who became the longest serving butcher of 38 years after closing in June 1980 after the eight shops in this block were modernised.







# **PARTICIPATING RESEARCHERS**

**from the St Marys & District Historical Society**

## **Caroline Volkiene**

Caroline is a descendant of the Hackett family, one of the older families in St Marys.

Caroline grew up in one of the “Duration Cottages” at the highway end of Carinya Ave. Born and raised in St Marys she attended St Marys Public School then St Marys High School. For many years Caroline was a student at the local Cuckson’s Bodenwieser School of Dance. She also attended Sunday School and Church in the old Methodist Church that once stood on Queen Street. In 1972 Caroline was married there. Her working career was in Office Administration.

Caroline is a member of St Marys & District Historical Society and enjoys the many shared memories about growing up in St Marys. By recording and sharing these stories, photographs and memorabilia of those past St Marians’ she believes it helps keep alive the spirit of the many people who have contributed and believed in this place.

## **Lyn Forde**

Lyn was born in Penrith, lived in St Marys, Kingswood and now lives in Werrington. A former student of St Marys Public School, St Marys High School and Penrith Business College, Lyn in a seventh generation Australian and is connected to two First Fleeters with links to Ropes Crossing.

Lyn has researched local history since the 1970’s and is a contributor of the History Page in the local Nepean News. Lyn was a Secretary of the first St Marys Historical Society and currently a Research Officer & Vice-President. She is also a member of Encore Historical Sewing Group at St Marys Corner. Lyn has researched and self-published several books on local history, it is the area where she feels at home and where she can research her earlier family and community connections. Lyn retired in 2005 working in administration, is divorced and a great grandmother of four.





## Eric Kent

Eric moved to St Marys from Kingswood in 1947 when he was 10 years old. Eric lived in the “Duration Cottages” and attended St Marys Primary School and Penrith High School. After he left school he worked at Ducon’s Condensers, the factory that was part of the munitions area that was built during World War 2.

Eric was one of the original members of the Nepean District Pipe Band until illness prevented him from doing so and was involved as Cub Scout leader in the 1st St Marys Scout Troop for a number of years. After working for Ducon’s (later known as Plessy’s) for 14 years Eric went into the building trade doing waterproofing and building maintenance.

Eric has also participated in the Penrith Relay for Life for more than eight years and he is now an active member of the St Marys and District Historical Society.

## Paul Mills

Paul was born in Griffith NSW. He moved with family to St Marys in 1954 when his parents decided to open their own business. Paul attended both local schools, St Marys Public and St Marys High School. He worked from a very early age in his dad’s “Jim Mills Menswear” shop at 193/195 Queen Street and after leaving school worked full time. Paul worked 44 years in the one job. After retirement Paul and his wife Margaret joined St Marys and District Historical Society. Paul is also involved with the Nepean Men’s Shed where he teaches Pyrography (Woodburning). Many examples of his work can be found in various places around Australia.



# THE CREATIVE TEAM

## Stephanie Peters

Stephanie is an artist, educator, curator and community developer living in Sydney, Australia. Her art practice encompasses studio work, community and public art projects and her current practice looks to explore connections to place; both urban and natural environments. Her works are held in the Art Gallery of NSW and the National Gallery of Australia collections and her community and public art practice has been in collaboration with Liverpool, Inner West, Canterbury-Bankstown, Canada Bay, Woollahra and Penrith Councils. She has also worked creatively with a number of businesses and not-for profit organisations. She has developed her practice through a number of residency and studio scholarships in Portland Victoria, Liverpool Sydney, Japan, Mexico, and New York City. For further information visit Stephanie's website: [www.stephaniepeters.net](http://www.stephaniepeters.net)

## Lorrina Al-Khouri

Lorrina is a recent graduate of a Bachelor of Design (Visual Communication). She began her degree with the intention of being a graphic designer specialising in brand identity, print and photography, but her curiosity and ambitious nature led her to expand her interests and skills over the years in to production and motion design. She has been working in broadcast media as a promo producer for almost 3 years now, being fortunate enough to work alongside and make strong connections with many professionals in the industry. Inspired by her sixth grade teacher, parents and the TV show "Art Attack," she has been interested in art and design for many years. Lorrina has started her own Instagram blog called The Art Diaries, at [www.instagram.com/lorrina.a](http://www.instagram.com/lorrina.a) as a platform for sharing her love for art and design, as well as her own design journey.

## Nathaniel Morrison

Nathaniel is a fellow design graduate with connections to the surrounding suburbs of Western Sydney where he has been encouraged by family, friends and teachers to reach his creative and academic goals. He specialises in visual branding, illustration and typography and has developed these skills while working at the University's "Rabbit Hole" studio. There he was able to gain valuable experience and explore his passions for design and coffee. His personal work typically involves surrealism and relies on symbolism for self-expression. He is humbled by the rich and personal history of St Marys and is grateful for being able to take part in this community project. He looks forward to continuing his path in the graphic design industry and future projects. For further information Nathaniel can be contacted at [nmorrisondesign@gmail.com](mailto:nmorrisondesign@gmail.com)





# IMAGE CREDITS

Page 3: Photographs of Queen Street St Marys in 1970s. Taken in 1971. Photographers unknown. Penrith City Library Photographic Collection.

Page 5: Photograph of Queen Street St Marys in 1970s. Photographer unknown. Penrith City Library Photographic Collection.

Page 6: Photographs of Queen Street St Marys in 1970s. Taken in 1971. Photographers unknown. Penrith City Library Photographic Collection.

Page 8: Bennett Wagon Workers. Circa 1890. Photographer unknown. Albert Evans Collection. Penrith City Library.

Page 10: Photographs of Queen Street St Marys in 1970s. Taken in 1971. Photographers unknown. Penrith City Library Photographic Collection.

Page 12: Photograph of Queen Street St Marys in 1970s. Taken in 1971. Photographer unknown. Penrith City Library Photographic Collection.

Page 14: Aerial photograph of St Marys (detail). 2017. Penrith City Council.

Page 17: St Marys Fruit King Shop, Unknown photographer and date. Penrith City Library Photographic Collection.

Page 19: Beryl Field outside Ryan family home in Queen St, Circa 1945-1949. Image from Rodney Field private collection.

Page 21: Coachman's Park, Queen Street and Charles Hackett Drive St Marys. Estimated taken in 1960s, Unknown photographer. Penrith City Library Photographic Collection.

Page 23: Crown Theatre St Marys in 1960s. Reproduction from local newspaper clip. Photographer, date and source unknown.

Page 25: Methodist Church, St Marys 1884-1917. Photograph by Charles Kerry, unknown date. The Tyrrell Collection, NSW Museum of Applied Arts & Sciences.

Page 27: Fleming's Corner Shop St Marys, Photographer and date unknown. Penrith City Library Photographic Collection.

Page 29: Jim Hackett Hairdresser and Tobacconist Shop in 1967. Mick Hackett (Jim Hackett's father), Jim Hackett, Sid Barwick and Guido Piccirilli, 1967, Unknown photographer. Guido Piccirilli's private collection.

Page 31: Always First with the Latest Fashions, Jim Mills Menswear Shop on 193/195 Queen Street. Photograph by Paul Mills, 1972. Paul Mills' private collection.

Page 33: Bennett's Wagon Workshop on Queen Street, Unknown date and photographer. St Marys and District Historical Society's image collection.

Page 35: First Commonwealth Bank in St Marys on the side of the St Marys Post Office on the Great Western Highway, Unknown photographer, date and source.

Page 37: Portrait of John Oxley, Unknown photographer and date. Source: King Family History, Phillip Thompson Associates.

Page 39: Walter "Wally" Williams' Newmarket Butchery Shop. Estimated taken 1908. Unknown photographer and source.

Page 40: Caroline Volkiene (right) and Lyn Forde (left) at the research facilities. Taken in November 2017. The New South Wales State Archives, Kingswood.

Page 42: Eric Kent (left) and Paul Mills (right) at the research facilities. Taken in November 2017. The New South Wales State Archives, Kingswood.

Page 44: iPhoto Application collage treatment of bulk images selected for Windows on Queen Project. December 2017

Page 46: Photograph of Queen Street St Marys in 1970s. Taken in 1971. Photographer unknown. Penrith City Library Photographic Collection.

Queen Street Riches and Textures is an initiative of the  
St Marys Corner Community and Cultural Precinct.

St Marys Corner is a community and cultural precinct that  
delivers a range of social services and programs and supports the  
development and facilitation of a broad range of cultural projects.

For more information on Queen Street Riches and Textures and  
other cultural projects at St Marys Corner please visit  
[culturecreativity.com.au/QSRT](http://culturecreativity.com.au/QSRT)

